

Goff's
G2
DOORS
Simply. Intelligent.

High Speed

Up to 36" per second

Low Maintenance

No cables, wheels, springs, or
sewn construction

Wind Load Rated

45mph wind load*

Durable

Fiberglass windbars won't bend
or break

Automatically resets after impact

Quick & Easy Installation

Upper Box completely assembled
in factory

Multi-Season

Exchangeable panels available in
mesh, clear & solid vinyl

Fire Resistant

Meets NFPA-701 & CSFM
standards for flame retardancy

Applications Include:

- Loading Docks
- Waste Areas
- Plant Overhead Doors
- Garages
- Food Packaging & Processing Facilities
- Car Washes
- Process Areas

**High Performance
Vinyl & Mesh
Roll-Up Doors at
Affordable Prices!**



*Wind Load tested on a 10' x 12' solid vinyl Roll-Up Door per ANSI/DASMA 108-2002

Material & Sizes

Panel Construction

- G-2 Doors feature welded seams for strength & durability.

Material

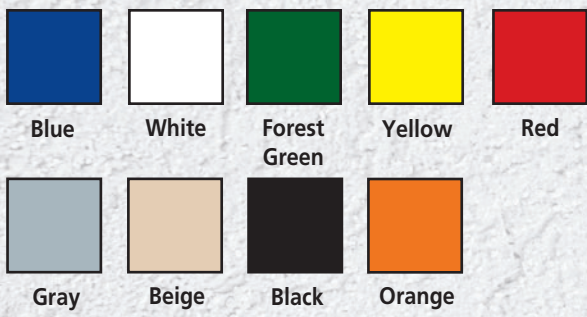
- Easily replaceable, exchangeable panels available in solid vinyl, mesh, & clear PVC.
 - 11 oz Mesh: 17 X 11 polyester scrim/65% shade factor
 - 18 oz Coated Colored Vinyl
 - 40 mil Double Polished Clear PVC
- Resistant to all ultraviolet rays
- Rot, tear and mildew resistant

Sizes

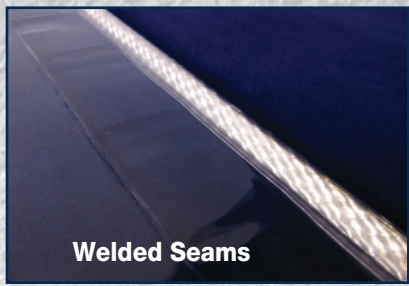
- G2 Doors are available custom sizes up to 16' x 16'.

Colors

18oz Vinyl Color Options



Mesh Color Options



Hardware & Components

Extruded PVC Side Seals

- Ensures a tight seal along vertical edges

Custom Fiberglass Windbars

- Bend if loaded, Won't break or kink

Custom Extruded Aluminum Side Beams

- 2" deep sleek design

Slanted Upper Box

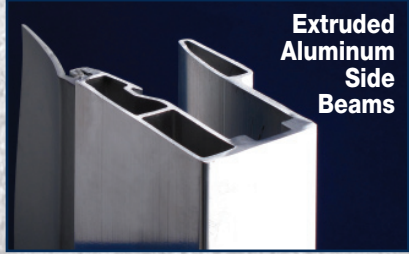
- Slanted Upper Box allows for water run off

Reverse Safety Feature

- Door automatically reverses if beam photo eye is broken.

Auto Reset

- Automatically resets after impact or blow out



Operations/Models

G-2 Doors are Available in a both Manual & Motorized Operations



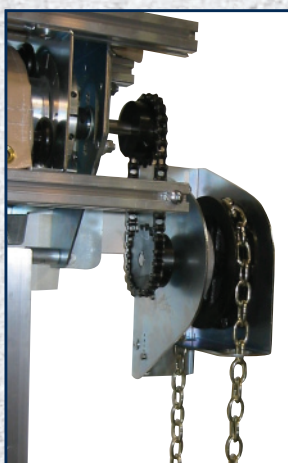
1800 Series

- 18" per second In Tube Motor
- 110 Volt Motor
- 12/24* Cycles per hour
- Limit Switch Controls
- Maintained Toggle Standard



2800 Series

- 28" per second High Speed External Operator
- Completely Water & Dust Proof
- 24/40*/70† Cycles per hour
- 110 Volt Motor
- Direct Quill Drive to Door
- Sealed Oil Bath Right Angle Drive
- Manual Crank Override in Case of Power Failure
- Nema 4 Control Standard



Chain Hoist Series

- Manual Open and Close with a Chain Hoist Mechanism
- Start-Stop at any Location
- Lockable



3600 Series

- 36" per second High Speed External Operator
- 110 Volt Motor
- 160 Cycles per hour
- Chain Hoist Override in Case of Power Failure
- Nema 1 Control Standard

*With high duty cycle upgrade

†With high duty cycle and fan kit upgrade

Mounting

Face Mount

Mount outside to the Face of the building
Upper Box Completely Assembled

- * Not available if dock seals are present
- * Requires 6" of clearance from the building

Projection Mount

Mount inside the building beyond the existing security door

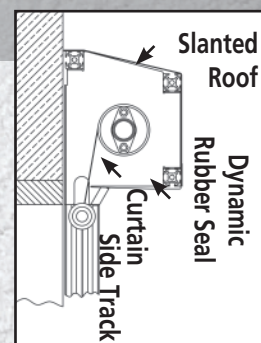
- Custom aluminum standoff brackets and corner gussets used to extend the door from the wall past the existing door.
- Vinyl filler panels included to fill the space between the wall and the door.

Upper Box Completely Assembled

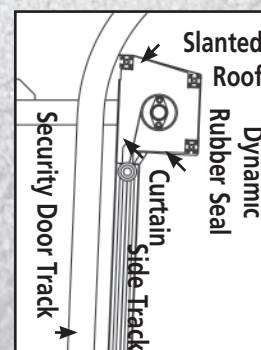
- * Projection Mount Site Survey Form Required with order

For additional mounting requirements visit:

www.goffscurtainwalls.com/product-literature-specifications



Face Mount



Projection Mount

